



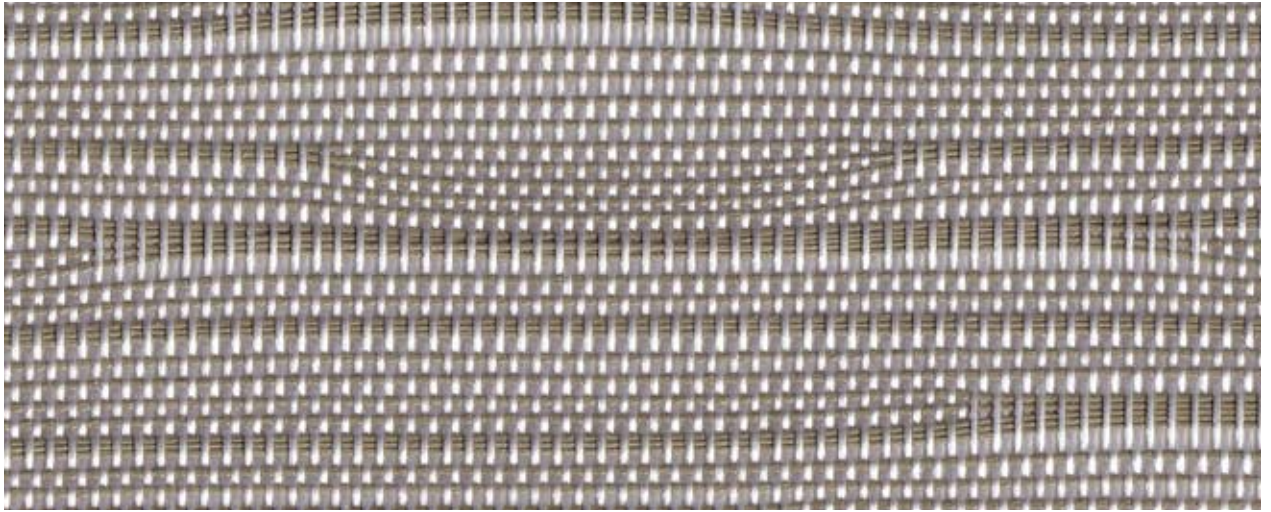
FOCUS ON QUALITY

SC-T7
Classic plain pattern

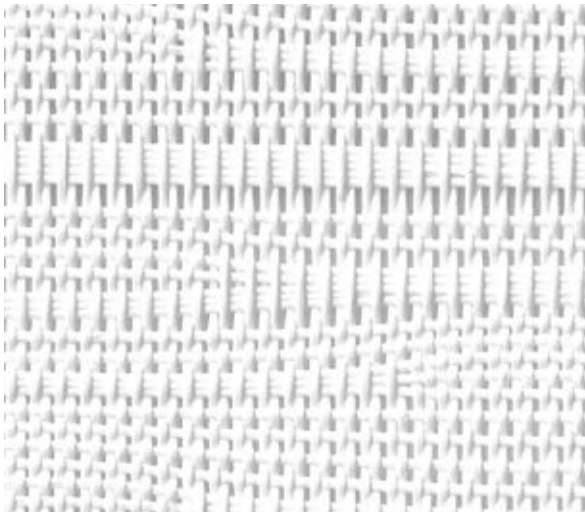


SC-T7 CLASSIC
PLAIN PATTERN

Color Selection 



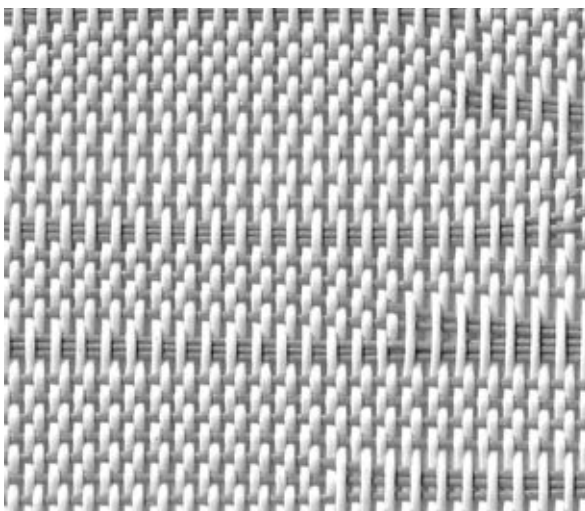
SC-T7-1004



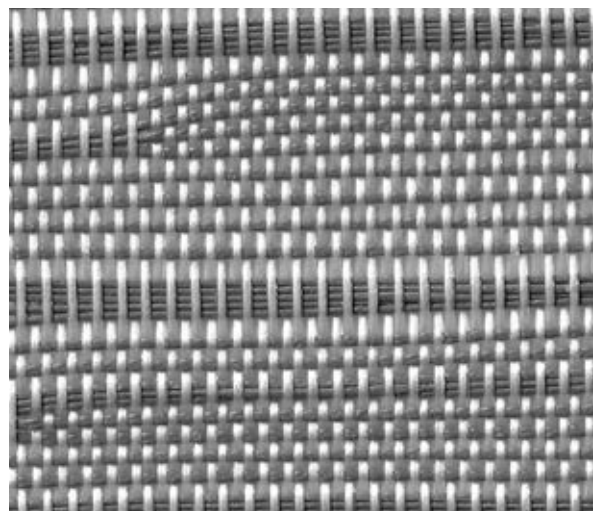
SC-T7-1001



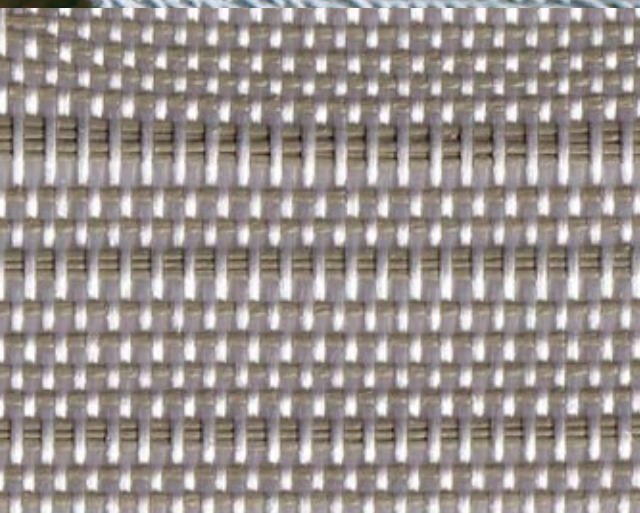
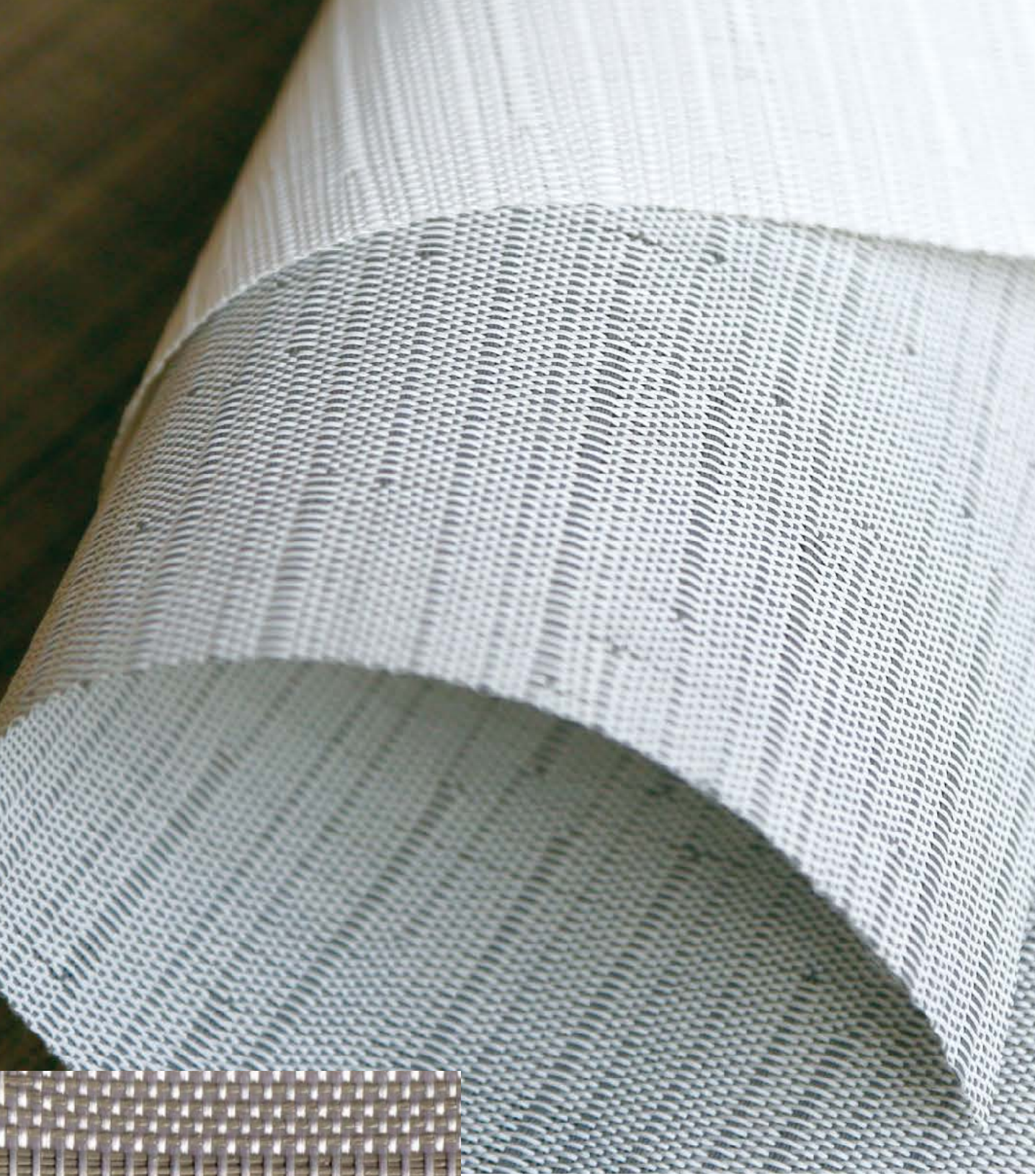
SC-T7-1002



SC-T7-1003



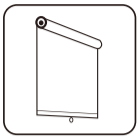
SC-T7-1005



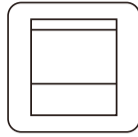
◀ Enlarge details

SC-T7 CLASSIC PLAIN PATTERN

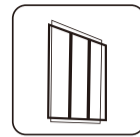
Main applications



Roller Shades



Zipper Track Roller Blinds



Panel Tracks

• Technical properties

Openness Factor **10%**

Composition	30%Polyester + 70%PVC	-
Finished width	300cm	118 inch
Weight per m ²	470g/m ² ±5 %	13.84 oz/yd ² ± 5 %
Thickness	0.70mm±5%	0.028" ± 5%
Yarn count	38 * 26	-
Breaking strength	Warp 2000N/5CM Weft 1400N/5CM	-

• Flame retardancy

Flame retardancy	B1	DIN4102
	Pass	NFPA 701
	B1	GB/T 17591

• Solar optical values

Color fastness	8 Grade	GB 8427
----------------	---------	---------

• Eco friendly

Health certification	GreenGuard Gold	UL 2818- 2022
Heavy metal test (Cd/Pb/Hg)	None	GB/T 26125-2011
Odor test	None	GB 18401-2010.6.7
PH test	Pass	GB/T 7573-2009
Formaldehyde content test	None	GB/T 2912.1-2009
Mouldproof test	0 (Highest)	ASTM G 21-15 (2021)

• Certifications, labels



- The technical data above are averaged values with a $\pm 5\%$ tolerance.
- The purchaser of our products is responsible for their application or transformation in relation to possible third party rights.
- The purchaser of our products is responsible for their installation in compliance with the standards, working practices and safety regulations of their destination country.
- Please refer to our warranty document with regard to contractual liability.
- Values quoted in this document are commonly used test results for design purposes. They are given for information only in order to offer our customers optimum usage of our products.
- Our products are subject to improvements resulting from technical developments and we reserve the right to modify their characteristics at any time.
- The purchaser of our products is responsible for checking the above data. The colours and textures presented are included for information only.

