

SUNCOOI
FOCUS ON QUALITY

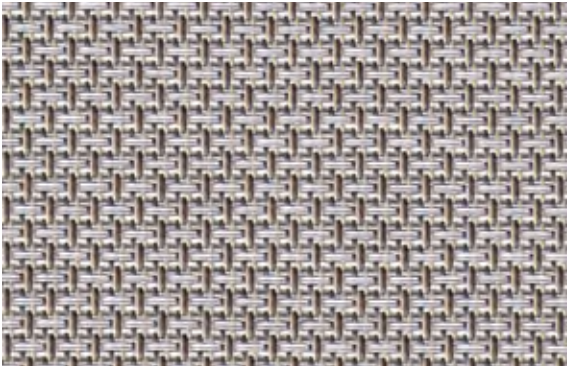
BY YUMA



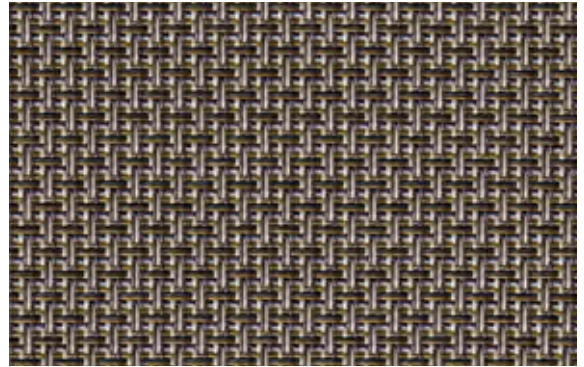
SC-U2

**EXTERIOR FABRIC
SERIES**

DIAMOND PATTERN DESIGN



SC-U2-901



SC-U2-902



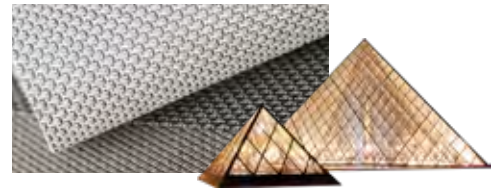
SC-U2-903



SC-U2-904

Diamond pattern design

Different from ordinary classic collections, it has a strong sense of design. The patterns are as beautiful as diamonds under the sunlight.



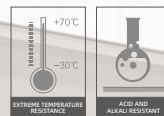
Dark colors are more suitable for outdoor environments

Dark outdoor products are more resistant to dirt, and the visual anti pollution effect is good in rainstorm and windy weather. At the same time, dark color products have a higher degree of integration with the outdoor environment and are not abrupt. More suitable for outdoor installation and use.



High stability performance

High strength industrial yarn imported from South Korea is used for lean weaving to ensure that the size of the fabric is stable, the shrinkage rate is low, and the fabric is less affected by severe environment such as storm and temperature change.



HIGH STABILITY, EVEN IF THE FABRIC IS PRESSED, IT CAN REBOUND QUICKLY.

High color fastness

The color pigments imported from BASF in Germany and Clariant in Switzerland. The outdoor fabric has high color fastness, reaching Grade 8 of the national standard. The product is not easy to fade due to prolonged exposure to wind, sun or rainstorm.



SC-U2 DIAMOND PATTERN DESIGN

Main applications



Lateral pergola blind



Outdoor windproof roller shades

• Technical properties

Openness Factor **9%**

Composition	30%Polyester + 70%PVC	-
Finished width	250/300cm	98/118 inch
Weight per m ²	425g/m ² ±5 %	12.54 oz/yd ² ± 5 %
Thickness	0.75mm±5%	0.029" ± 5%
Yarn count	48 * 46	-
Breaking strength	Warp 1600N/5CM Weft 1500N/5CM	-

• Flame retardancy

Flame retardancy	B1	DIN4102
	Pass	NFPA 701
	B1	GB/T 17591

• Solar optical values

Color fastness	8 Grade	GB 8427
----------------	---------	---------

• Eco friendly

Health certification	GreenGuard Gold	UL 2818- 2022
Heavy metal test (Cd/Pb/Hg)	None	GB/T 26125-2011
Odor test	None	GB 18401-2010.6.7
PH test	Pass	GB/T 7573-2009
Formaldehyde content test	None	GB/T 2912.1-2009
Mouldproof test	0 (Highest)	ASTM G 21-15 (2021)

• Certifications, labels



- The technical data above are averaged values with a +/-5% tolerance.
- The purchaser of our products is responsible for their application or transformation in relation to possible third party rights.
- The purchaser of our products is responsible for their installation in compliance with the standards, working practices and safety regulations of their destination country.
- Please refer to our warranty document with regard to contractual liability.
- Values quoted in this document are commonly used test results for design purposes. They are given for information only in order to offer our customers optimum usage of our products.
- Our products are subject to improvements resulting from technical developments and we reserve the right to modify their characteristics at any time.
- The purchaser of our products is responsible for checking the above data. The colours and textures presented are included for information only.



Shouguang, Shandong, China

www.yuma.cn

